

Zip Code 76522

Residential Statistics



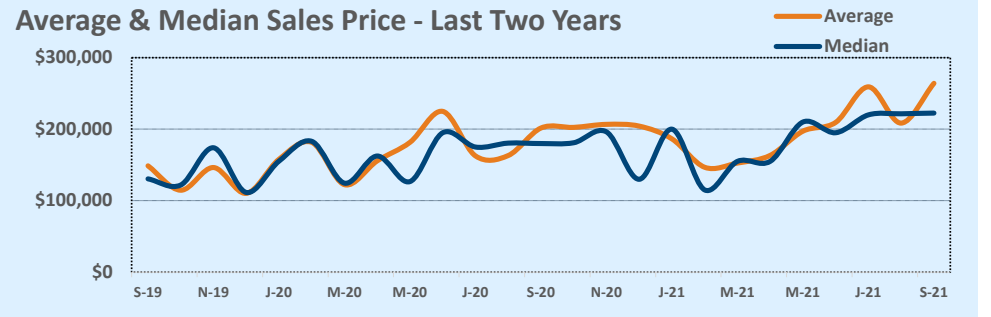
September 2021

Listings	This Month			Year-to-Date		
	Sep 2021	Sep 2020	Change	2021	2020	Change
Single Family Sales	10	11	-9.1%	85	72	+18.1%
Condo/TH Sales	--	--	--	--	--	--
Total Sales	10	11	-9.1%	85	72	+18.1%
New Homes Only	--	--	--	--	4	--
Resale Only	10	11	-9.1%	85	68	+25.0%
Sales Volume	\$2,641,224	\$2,217,800	+19.1%	\$17,657,919	\$12,954,924	+36.3%
New Listings	--	--	--	--	--	--
Pending	8	7	+14.3%	11	71	-84.5%
Withdrawn	--	--	--	7	8	-12.5%
Expired	--	--	--	14	3	+366.7%
Months of Inventory	0.7	0.4	+92.5%	N/A	N/A	--

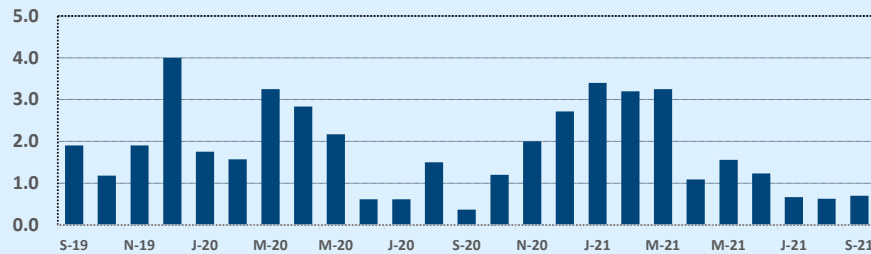
Price Range	This Month			Year-to-Date		
	New	Sales	DOM	New	Sales	DOM
\$149,999 or under	2	1	88	31	26	14
\$150,000- \$199,999	3	3	5	21	16	6
\$200,000- \$249,999	1	3	21	24	22	16
\$250,000- \$299,999	1	--	--	13	13	9
\$300,000- \$349,999	2	--	--	4	2	5
\$350,000- \$399,999	2	2	14	5	3	11
\$400,000- \$449,999	--	--	--	1	1	17
\$450,000- \$499,999	--	--	--	--	--	--
\$500,000- \$549,999	--	1	4	1	1	4
\$550,000- \$599,999	--	--	--	1	--	--
\$600,000- \$699,999	--	--	--	2	--	--
\$700,000- \$799,999	--	--	--	1	1	10
\$800,000- \$899,999	--	--	--	--	--	--
\$900,000- \$999,999	--	--	--	--	--	--
\$1M - \$1.99M	--	--	--	--	--	--
\$2M - \$2.99M	--	--	--	--	--	--
\$3M+	--	--	--	--	--	--
Totals	11	10	20	104	85	12

Average	This Month			Year-to-Date		
	Sep 2021	Sep 2020	Change	2021	2020	Change
List Price	\$261,610	\$201,940	+29.5%	\$203,539	\$181,303	+12.3%
List Price/SqFt	\$139	\$95	+45.5%	\$118	\$96	+23.3%
Sold Price	\$264,122	\$201,618	+31.0%	\$207,740	\$179,930	+15.5%
Sold Price/SqFt	\$141	\$96	+47.4%	\$121	\$95	+27.1%
Sold Price / Orig LP	101.8%	100.0%	+1.8%	102.0%	99.1%	+2.9%
Days on Market	20	46	-56.6%	12	30	-61.2%

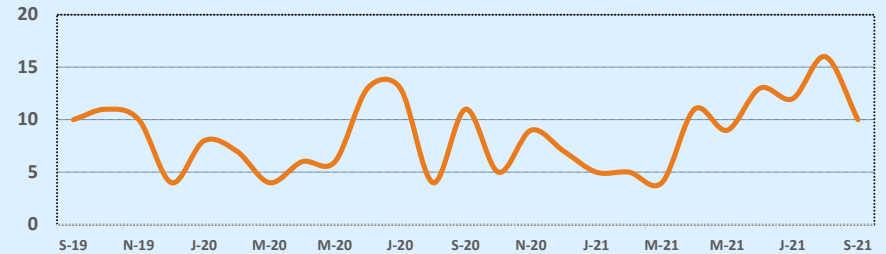
Median	This Month			Year-to-Date		
	Sep 2021	Sep 2020	Change	2021	2020	Change
List Price	\$214,950	\$179,990	+19.4%	\$190,000	\$175,950	+8.0%
List Price/SqFt	\$126	\$96	+32.2%	\$113	\$94	+20.6%
Sold Price	\$222,500	\$179,900	+23.7%	\$200,000	\$175,950	+13.7%
Sold Price/SqFt	\$132	\$98	+34.7%	\$116	\$92	+26.2%
Sold Price / Orig LP	100.0%	100.0%	+0.0%	101.0%	100.0%	+1.0%
Days on Market	6	24	-77.1%	5	14	-64.3%



Months of Inventory - Last Two Years



Number of Sales - Last Two Years



Based on information from the Austin Board of REALTORS® (alternatively, from ACTRIS). Neither the Board nor ACTRIS guarantees or is in any way responsible for its accuracy. The Austin Board of REALTORS®, ACTRIS and their affiliates provide the MLS and all content therein "AS IS" and without any warranty, express or implied. Data maintained by the Board or ACTRIS may not reflect all real estate activity in the market.